

AMERICAN WRECKING COMPANY

LACY STREET PRODUCTION CENTER



ABOUT US

LACY STREET

Conveniently located near Downtown Los Angeles, Lacy Street Production Center was converted into a studio in 1980 for the Cagney & Lacey television series. The original 90,000 sq. ft. Columbia Mills property has been an industry staple ever since. From “Catch Me If You Can” to “Saw” to “Grey’s Anatomy” and “NCIS: Los Angeles”, Lacy Street Production center continues to play an important part in the city's motion picture history.

We would love to welcome you for a walkthrough!
Appointments can be scheduled via email at studioinfo@lacystreet.com.
Or call us at (323) 222 8872.

More information can be found on our website, lacystreet.com,
or on our Instagram [@lacystreetproductioncenter](https://www.instagram.com/lacystreetproductioncenter).

Our team looks forward to working with you in the future!



Stage 1
18' 10", 8250 SQ FT

STAGE 1 WAREHOUSE

Once an abandoned props warehouse, Building 1 has been restored to its original wood interior, measuring 8,250 sq. ft. This warehouse features various sized glass windows that allow in natural light. Building 1 is adjacent the Gate 1 Dirt Alley, allowing easy loading and unloading.



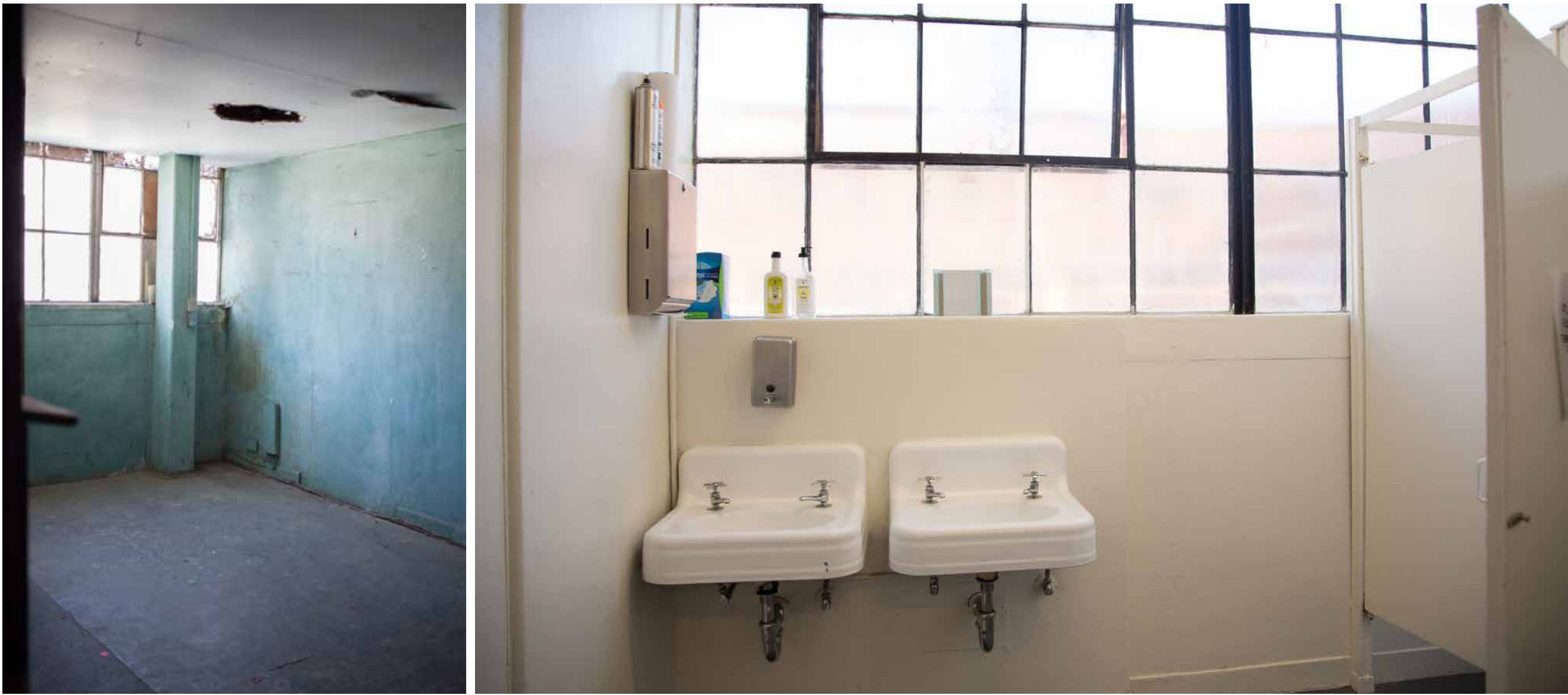
Soundproof stage
23'3" , 9900 SQ FT



STAGE 2

SOUNDPROOF STAGE

Our Soundproof Stage offers a 9,900 sq. ft. workspace with wifi, stocked restrooms, a kitchenette, AC, house power and a storage room. Stage 2 is also adjacent the Gate 1 Dirt Alley.

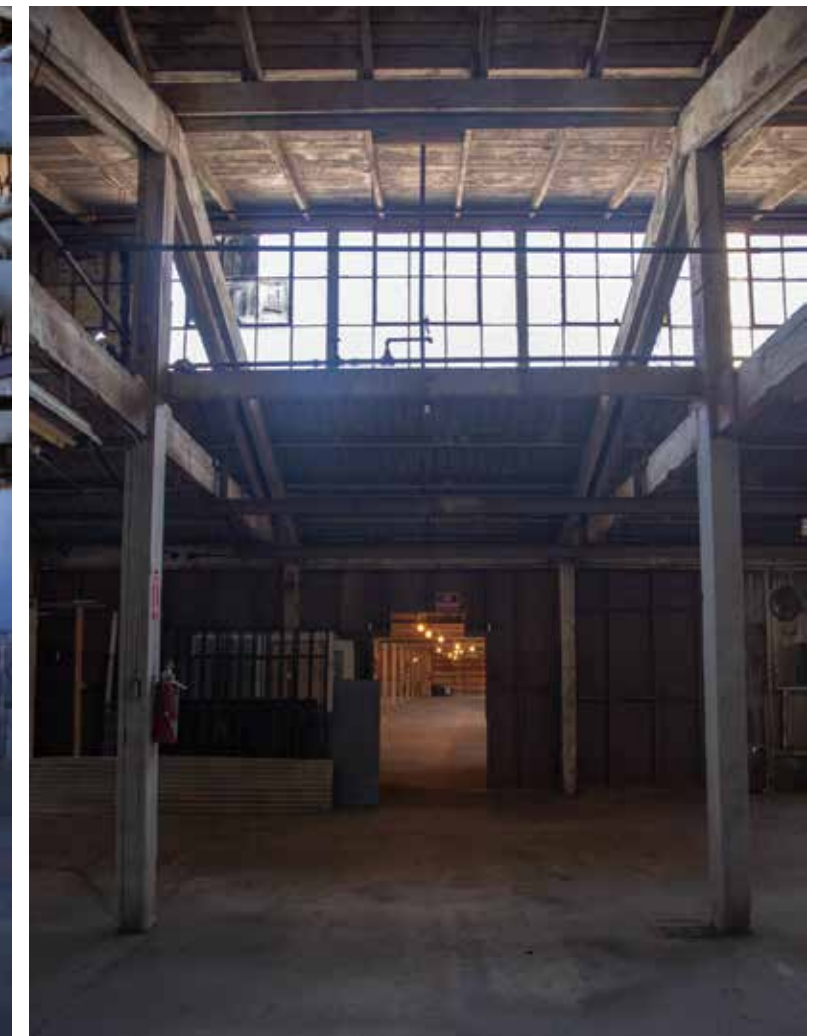


Large warehouse
20'7", 8240 SQ FT

STAGE 3

LARGE WAREHOUSE

Building 3, also known as The Large Warehouse, measures 8,240 sq. ft. Concrete floors, wall-to-wall windows, its original wooden structure and views over Gate 2 have made this one of our most iconic locations.



Second floor warehouse
11820 sq ft

STAGE 6

2ND FLOOR WAREHOUSE

The warm, natural light combined with the original wood floors and brick walls make our 2nd Floor Warehouse stand out. With its 11,820 sq. ft., it is also our largest workspace available.



Building 5
measures 14'4"

STAGE 5

PAINT ROOM

In between the 2nd Floor Warehouse and the Red Stairway is the Paint Room. An original metal sink, brick walls, and a robust sliding door together create an eerie atmosphere inside.



Stage 10
1750 sq ft

STAGE 10

WORKSHOP

The mezzanine inside the Workshop allows for versatile use of the space. It easily translates as a basement or attic, while the tall ceilings and factory windows give it a workshop feel.

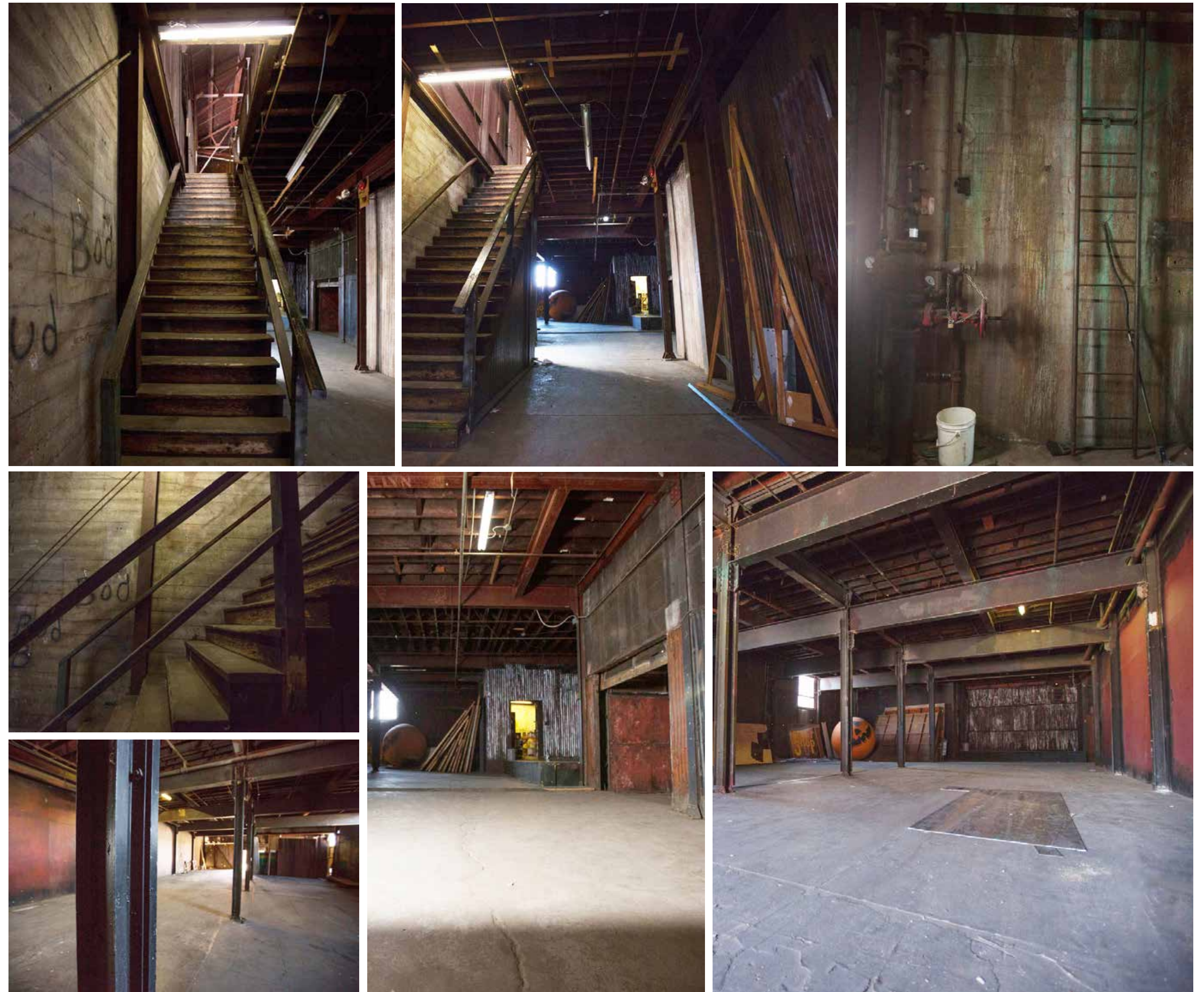


Small Warehouse
8,465 sq. ft. space

STAGE 12

SMALL WHAREHOUSE

Corrugated metal walls, industrial sliding doors, and varying wall colors combine to create a truly unique atmosphere inside the Small Warehouse. The space holds a stage and an original freight elevator, leading to the second floor of our studio.





HALLWAYS AND ACCENTS





A black and white photograph of an industrial courtyard. The scene is framed by tall brick buildings on both sides. In the center, there's a paved area with several picnic tables and benches. A large, leafy tree stands on the left side of the courtyard. Scaffolding is visible, extending across the courtyard from the buildings. The sky is overcast. The text "OUTDOOR SPACES" is overlaid in the center of the image, flanked by two horizontal white lines.

OUTDOOR SPACES

INNER COURTYARD

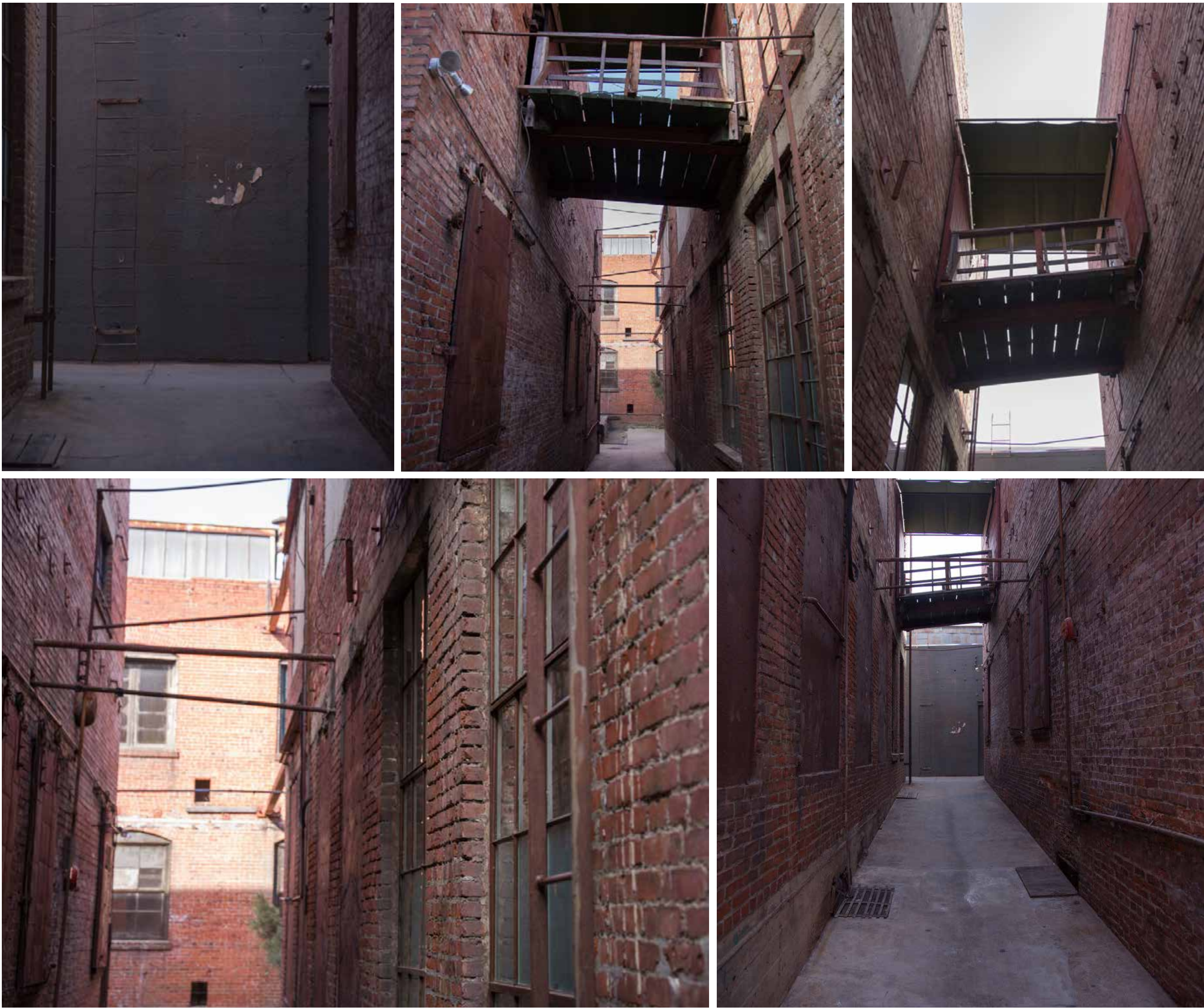
The Inner Courtyard is connected to the Main Alley. It holds a wooden stage surrounded by brick warehouses with stunning mullion windows and robust steel details.



LACY STREET PRODUCTION CENTER

MAIN ALLEY

Our Main Alley connects to the Back Alley and Inner Courtyard, making it ideal for walking or chase scenes. The brick walls and industrial accents give it a New York vibe.



LACY STREET PRODUCTION CENTER

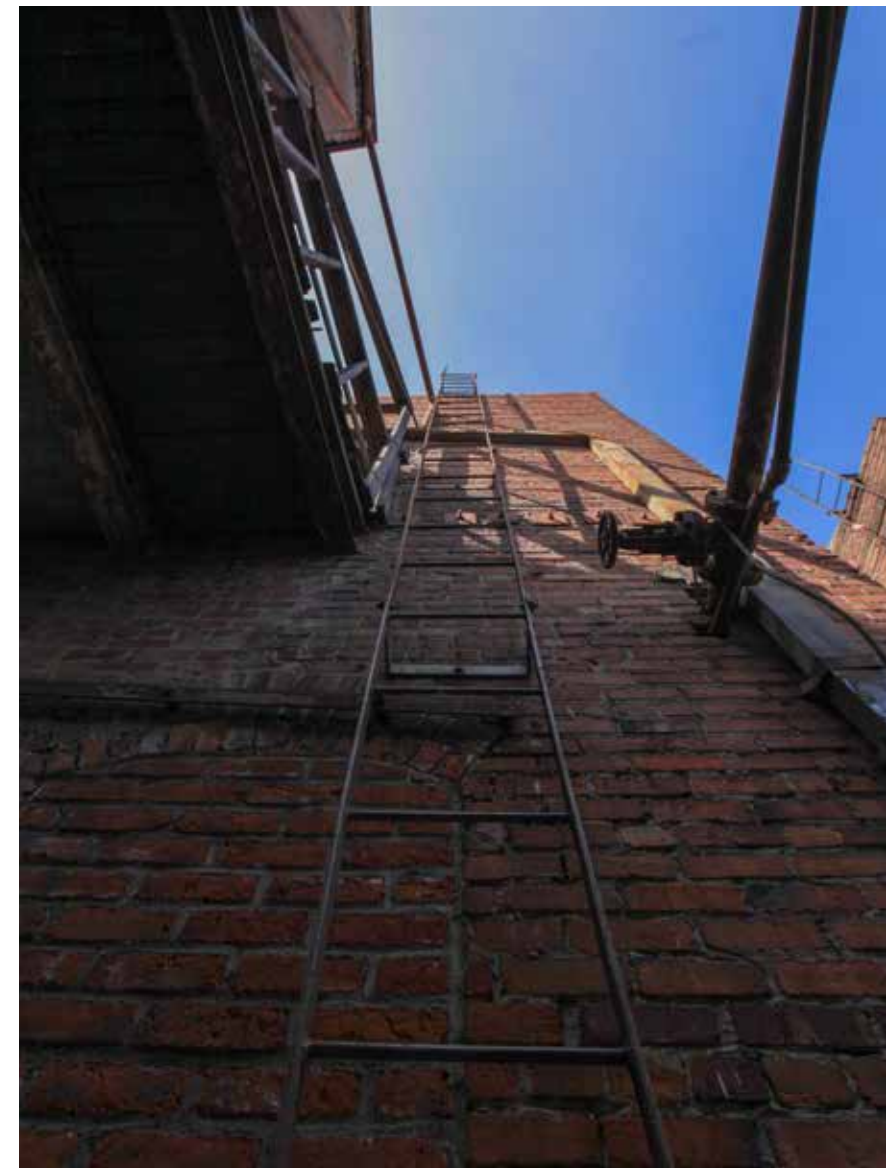
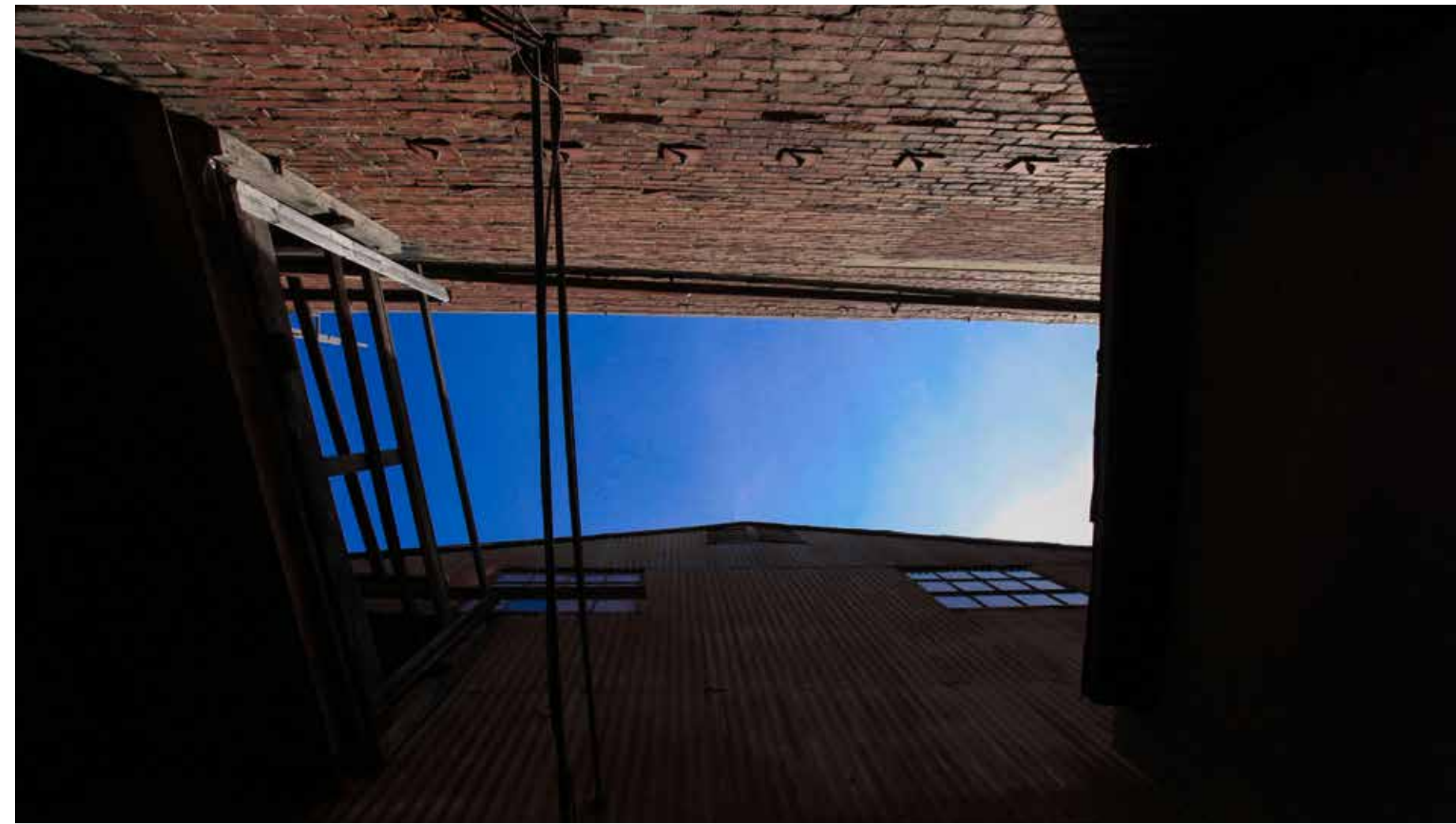
FRONT COURTYARD

The front courtyard lot offers crew a loading and unloading area on the east side of the property. It connects to building 12 and serves as the main entry point to the second floors of our studio.



BACK ALLEY

The Back Alley connects to the Main Alley and front courtyard Lot. Not only is it perfect for walking scenes, it also serves as a great background for stills thanks to the different textures and accents.



GATE 1

DIRT ALLEY

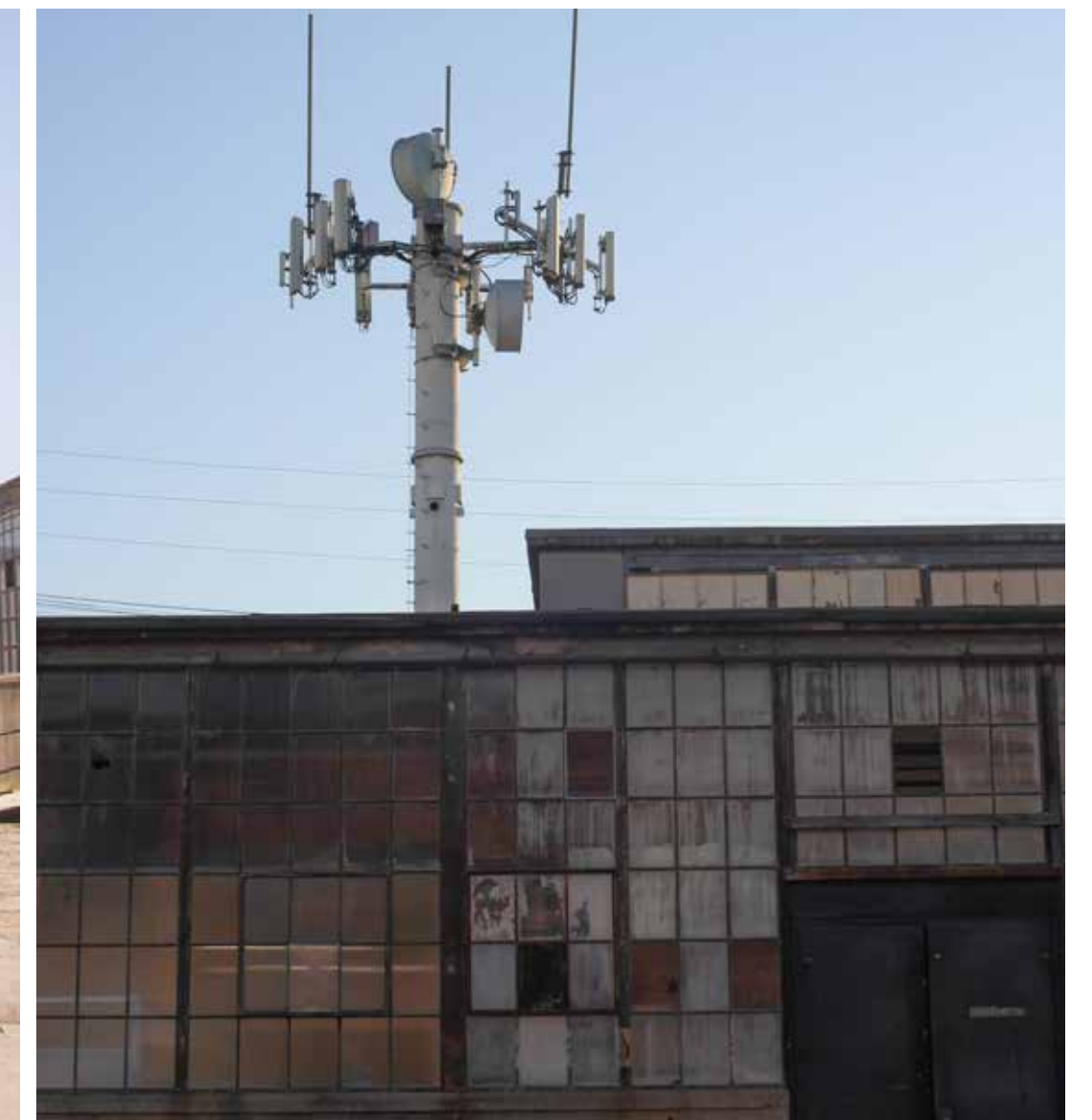
Dirt Alley sits inside Gate 1, enclosed by three warehouses, creating a grimy atmosphere. With easy street access, Gate 1 has served as a set, as well as a landing space for anything from crafty trucks and generators to talent trailers.



GATE 2

WAREHOUSE

Inside Gate 2 is our iconic Smokestack, the loading dock with crates and barrels, and three different styles of warehouse exteriors. It can be used as a shoot location as well as crew parking, depending on your needs. The lot holds about 50 personal vehicles.





CLIENTS



WARNER BROS.





2630 LACY STREET, LOS ANGELES, CA - 90031

CONTACT INFO

2630 LACY STREET, LOS ANGELES, CA - 90031
WWW.LACYSTREET.COM
STUDIOINFO@LACYSTREET.COM
TEL. 323 222-8872

SOCIAL MEDIA

📷 @lacystreetproductioncenter
📘 www.facebook.com/lacystreetproductioncenter